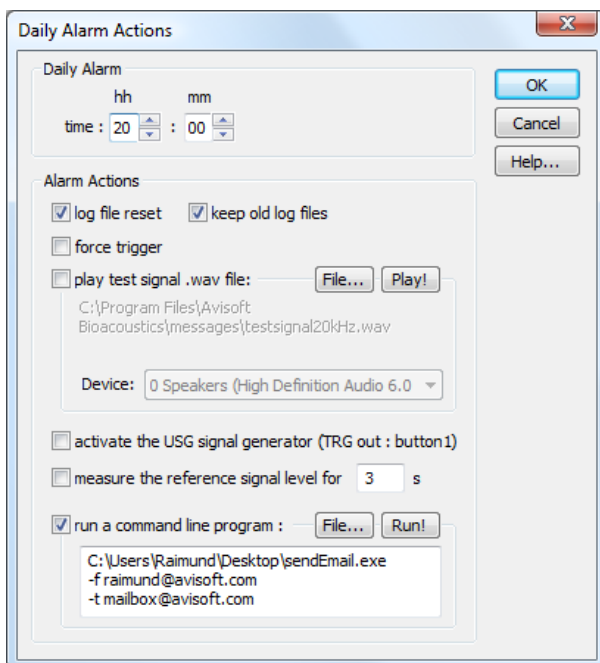


Avisoft-RECORDER Internet Connectivity

Automatically sending Avisoft-RECORDER log files via email

In passive bat monitoring applications it is often desired to regularly check the state of the monitoring system in order to identify potential problems. This can be accomplished by sending the log files created by the RECORDER software via email.

In order to avoid sending large log files (containing the data of several days or weeks), it is possible to create (and regularly reset) separate log files that only contain the data acquired during the last night. This functionality can be set up from the Avisoft-RECORDER command **"Monitoring" / "Daily alarm actions..."**. Check the option **"log file reset"** and enter the **"time"** of day at which the reset should be performed. This will create additional log files titled xxx_RECENT.LOG (and optionally xxx_RECENT.txt/.html/.xml if the Automated call parameter measurements have been activated), which will be deleted each day at the specified time of day:



The additional option **"keep old log files"** will not delete the previous daily log files, but rename them so that they will be available for later review.

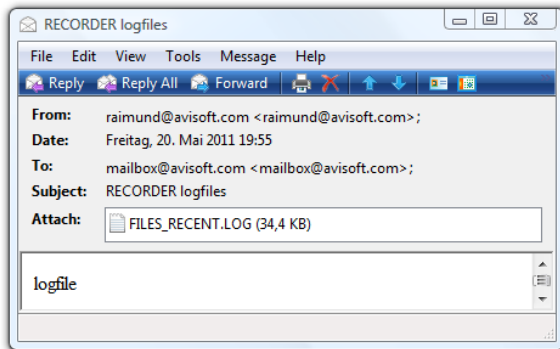
Use the option **"run a command line program"** to run a command line program that sends the log files each day at the selected time of day. A suited program would be for instance the free *sendEmail* application (available from <http://caspiandotconf.net/menu/Software/SendEmail>).

The format of the command line string for the *sendEmail* program would be as follows. Note that all strings that contain space characters (such as path names for instance) must be enclosed in quotation marks.

```
C:\Users\Raimund\Desktop\sendEmail.exe
-f raimund@avisoft.com
-t mailbox@avisoft.com
-u "RECORDER logfiles"
```

```
-s smtp.1und1.de:587
-xu mailbox@avisoft.com
-xp PASSWORD
-a "C:\Users\Raimund\Documents\Avisoft Bioacoustics\FILES_RECENT.LOG"
-m logfile
```

Note that you should normally use here the same E-Mail Server Settings that you already use in your office. Some E-Mail servers may however reject requests on the default port 25. In this case it is necessary to use the server port 587 instead (see http://en.wikipedia.org/wiki/Simple_Mail_Transfer_Protocol).



The log files could alternatively also be sent through a separate application such as the Windows **Task Scheduler** (<http://www.makeuseof.com/tag/send-automated-emails-save-time-sendemail-windows-task-scheduler>) or **Z-Cron** (available from www.z-cron.com).

Remote Desktop Connection

Another way for accessing the log files on a remote computer in the field would be to use the Remote Desktop Connection that is part of the Windows operating system. However, you might feel that setting up such a connection is a bit complicated (<http://windows.microsoft.com/en-US/windows-vista/Remote-Desktop-Connection-frequently-asked-questions>, <http://www.youtube.com/watch?v=oNauXvW6dJA>, http://www.youtube.com/watch?v=ftsN_L3ljk4).

We therefore recommend using the TeamViewer software (<http://www.teamviewer.com>) instead that provides very easy-to-use remote access and remote control capabilities.

Disable automatic updates

In case you are using a wireless internet access service with a limited monthly data transfer volume, it is very important to disable any automatic software update services on the remote computer (most importantly: **Start > Control Panel > System and Maintenance > Windows Update > Change settings**, select option “**Never check for updates (not recommended)**”). Otherwise, the regular updates might waste the available data transfer volume.

Resetting Wireless Internet Connections

Some wireless internet service providers may reset the internet connection (on their pre-paid options) after 24 hours. In this case it is required to make sure that the internet connection is initiated repeatedly each day. The easiest way to accomplish that might be to regularly shut down and boot the computer. The daily shut down can be configured from the RECORDER command "Monitoring" / "Shutdown time...". The automated boot can be accomplished by using the BIOS RTC Alarm function (note that the BIOS alarm function is usually not available on laptop computers).

The freeware software MWconn (<http://www.mwconn.net>) could be used to manage the mobile internet connection.