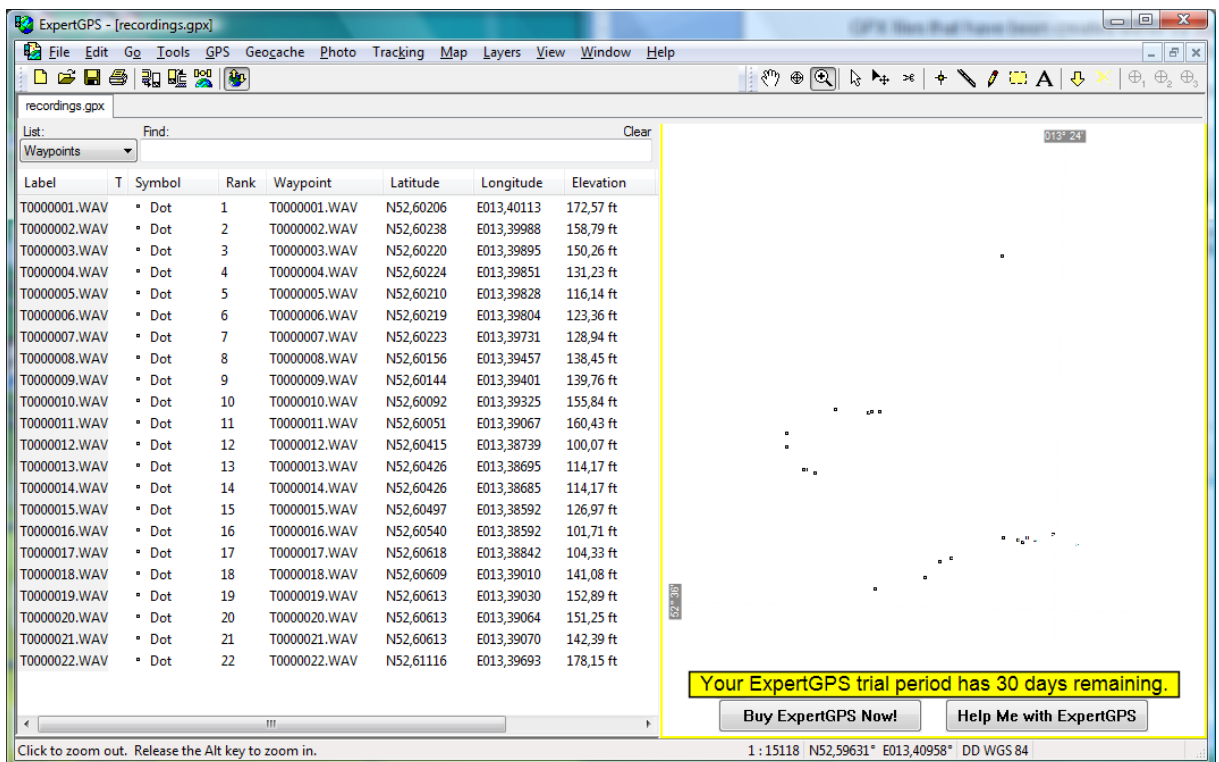
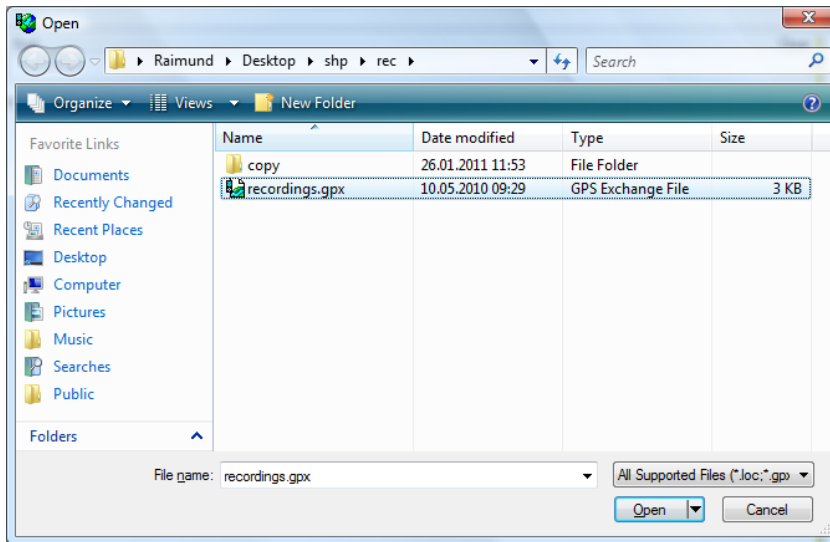


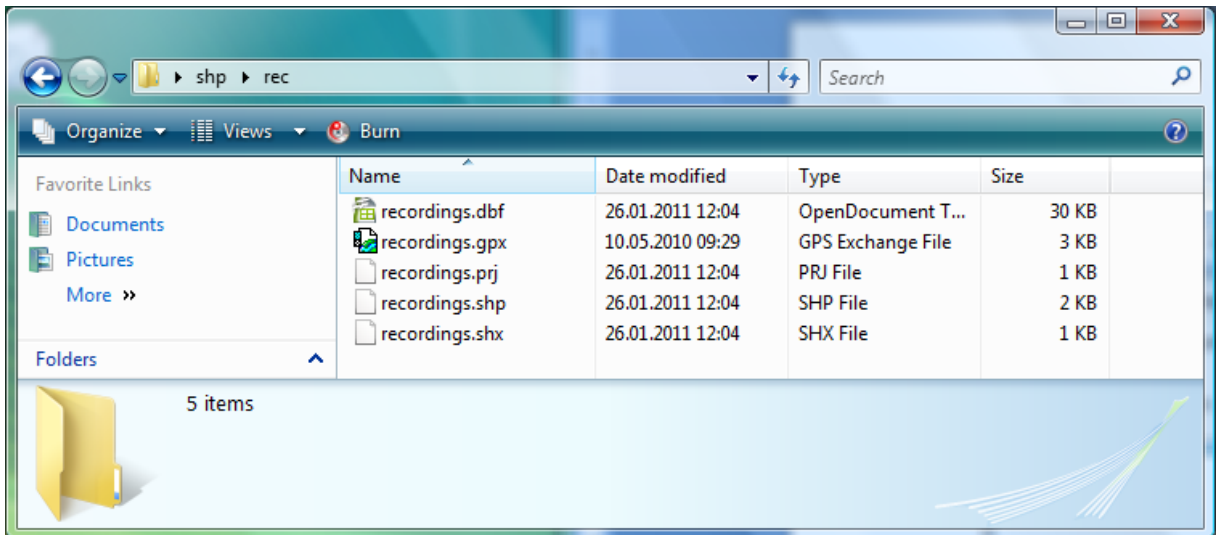
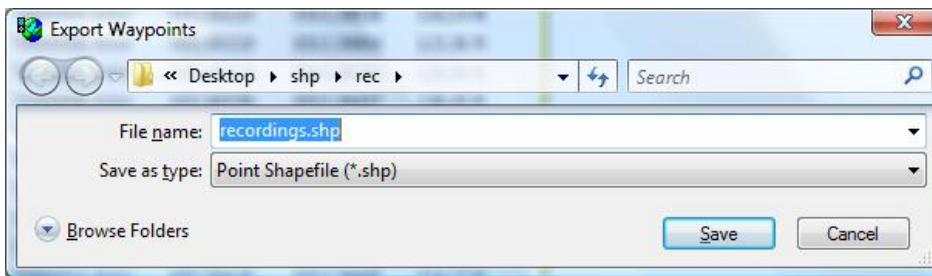
Converting Avisoft GPX files to ESRI Shapefiles

GPX files that have been created either by Avisoft-RECORDER or Avisoft-SASLab Pro can be converted to the ESRI shapefile format as follows:

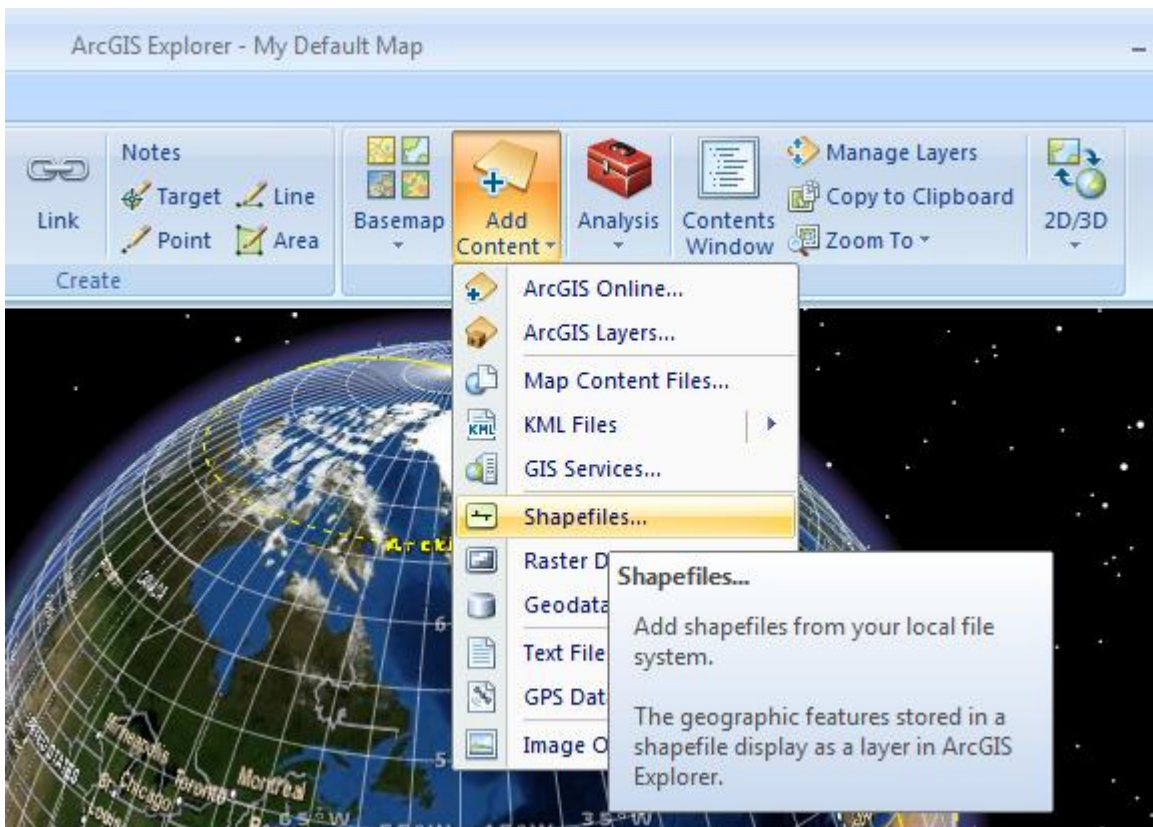
1. Install the ExpertGPS Map software from <http://www.expertgps.com>
2. Open the .gpx file in ExpertGPS:

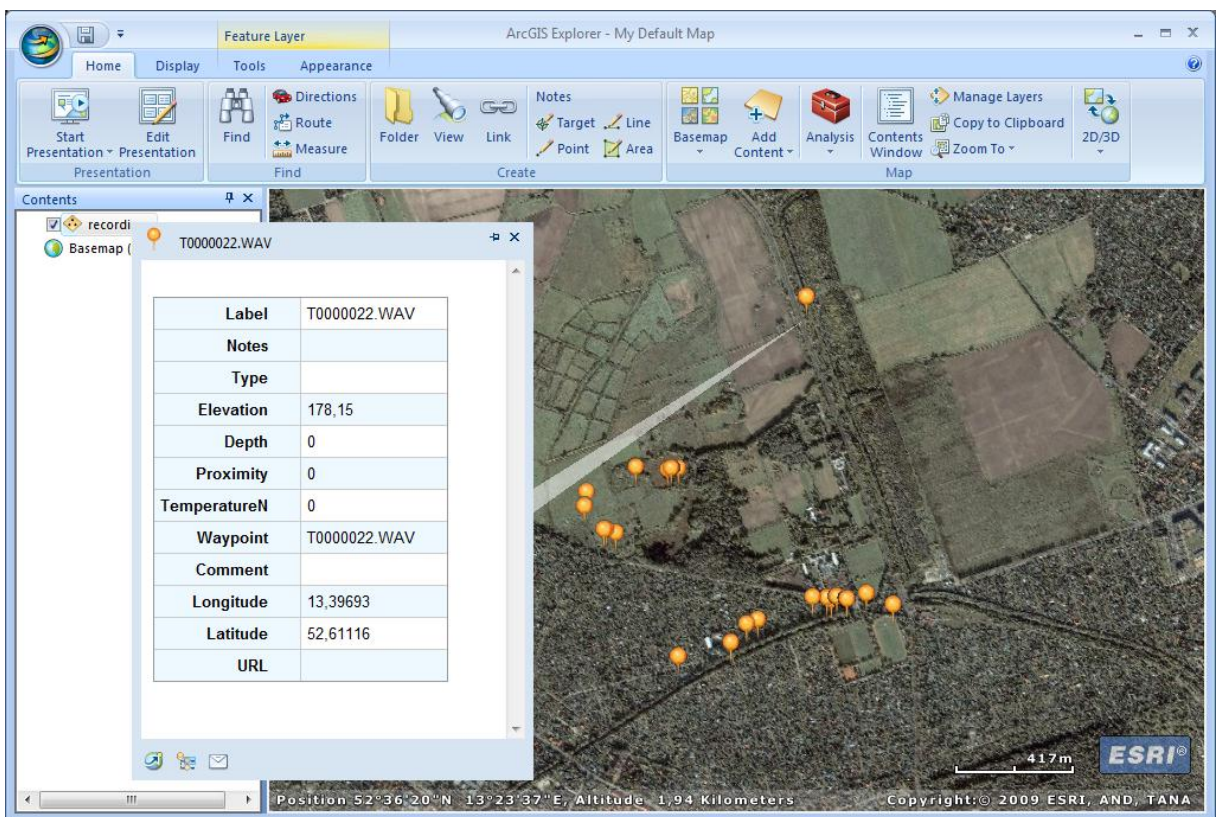
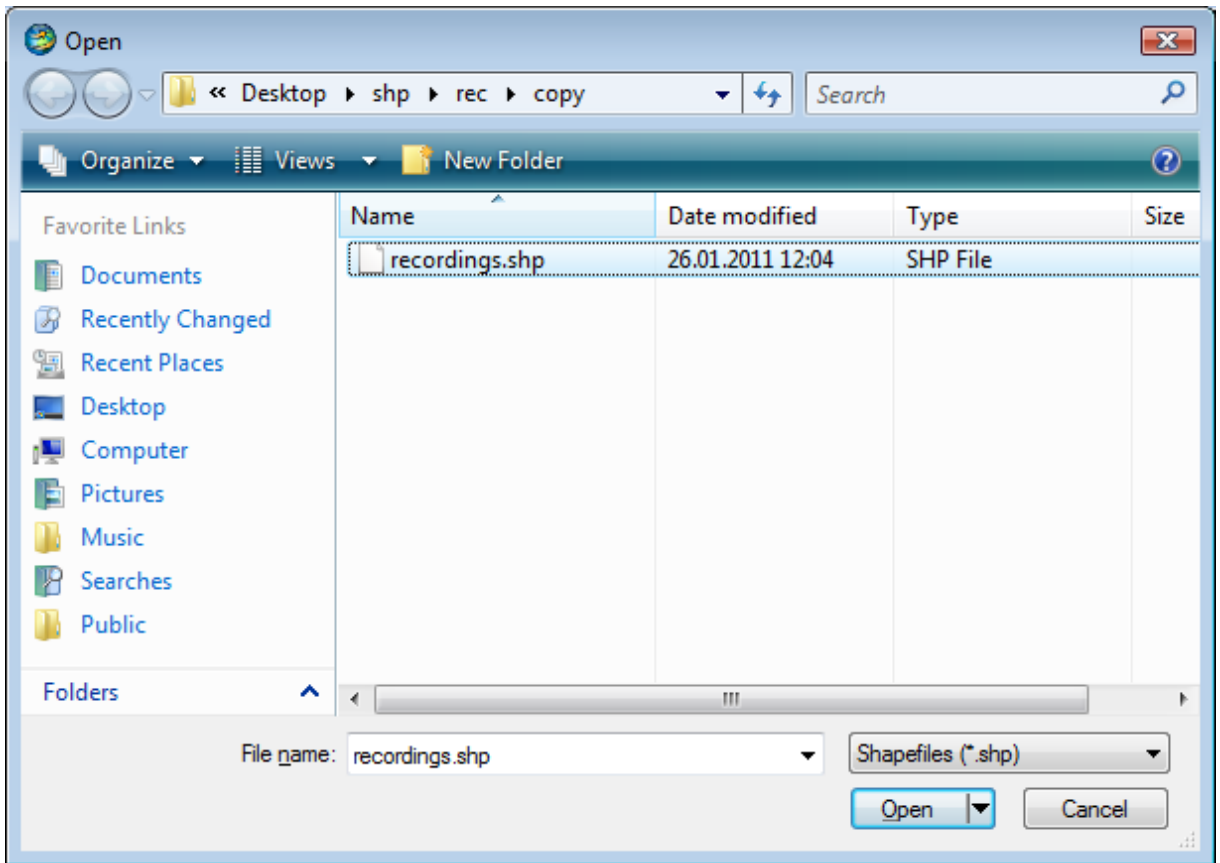


3. Export the waypoints by using the command File/Export Waypoints in List...



4. The created shapefiles can now be opened in any ESRI application such as ArcView or ArcGIS Explorer:





Additional Resources

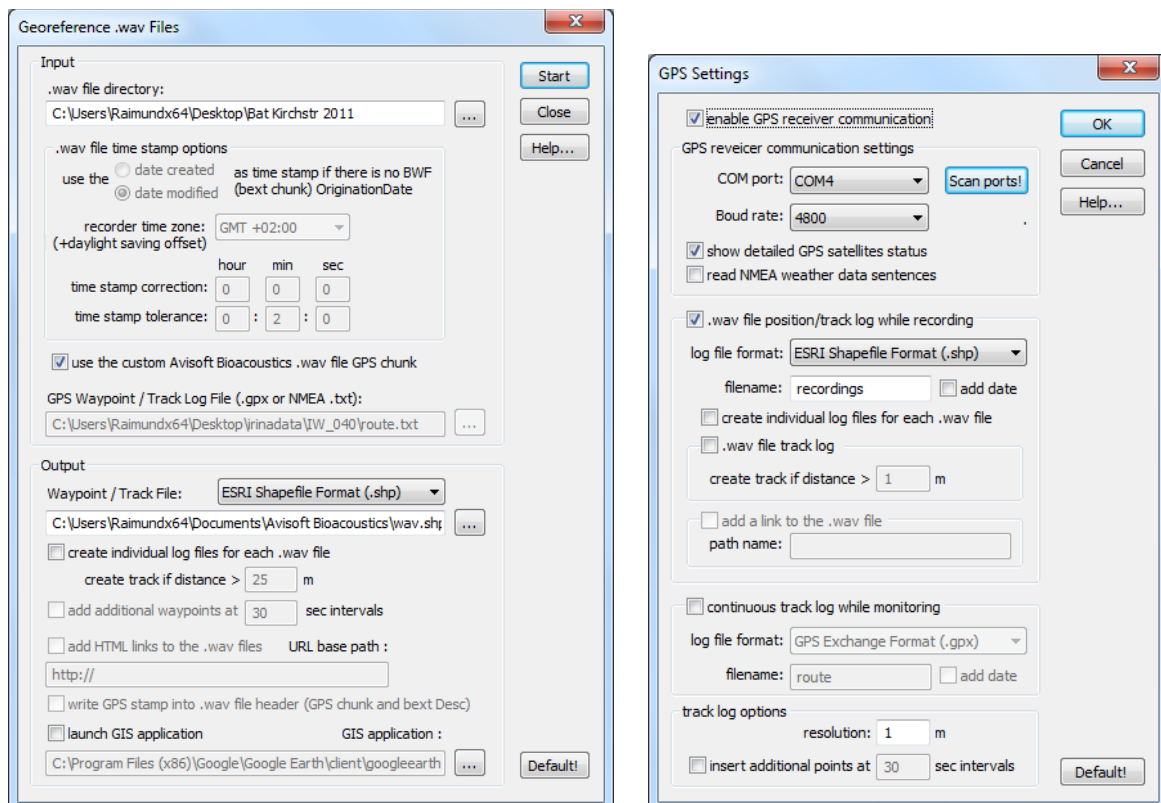
Note that .GPX and .KML files can also be imported directly by the ArcGIS Desktop software. However, it is required to first install the “ArcGIS Data Interoperability Extension” to enable that mode of operation.

<http://www.esri.com/software/arcgis/extensions/datainteroperability/index.html>

See also <http://resources.arcgis.com/gallery/file/map-templates/details?entryID=BC061D5E-1422-2418-7FCE-CC0FBB0C0825>

Update August 2012

Avisoft-SASLab Pro / Lite (version 5.2.06, 27 August 2012 or later) can create shapefiles from .wav files that have been recorded with the Avisoft-RECORDER software (command **File/Specials/Georeference .wav files...**)



Avisoft RECORDER (version 4.2.13, later than 28 August 2012) itself can also create shapefiles directly in real time.