

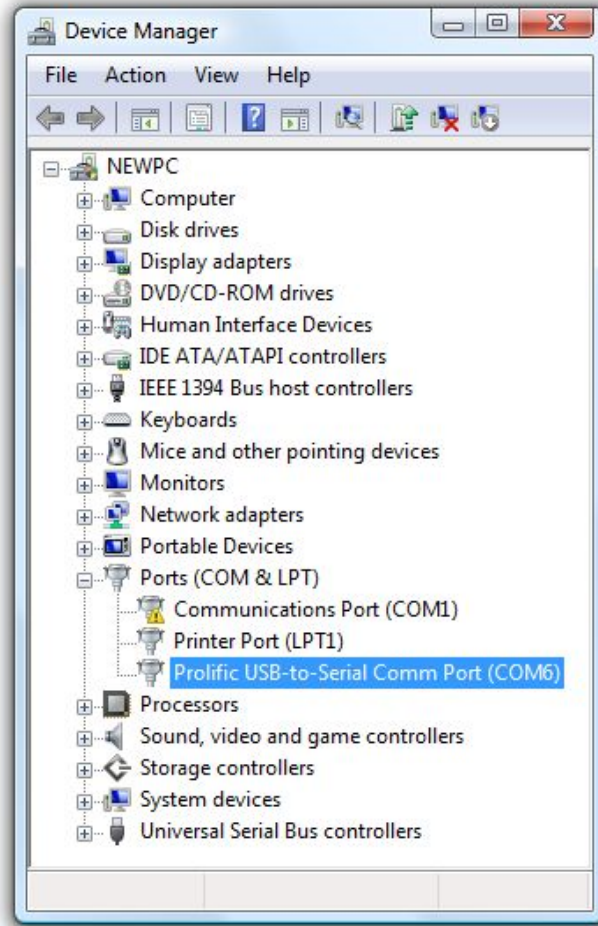
## Installing the GPS Receiver

The supplied USB GPS receiver allows to log the geographic coordinates of the recorded .wav files from the Avisoft-RECORDER software.

It is required to install a device driver for the GPS receiver. This can be done from the supplied NAVILOCK installationCD, from the GPS subfolder on the Avisoft Bioacoustics CD or from the manufacturer website [www.navilock.com](http://www.navilock.com).

Once the GPS receiver is connected to the PC, a new USB device will be detected and its "USB-Serial Controller" driver should be finally installed.

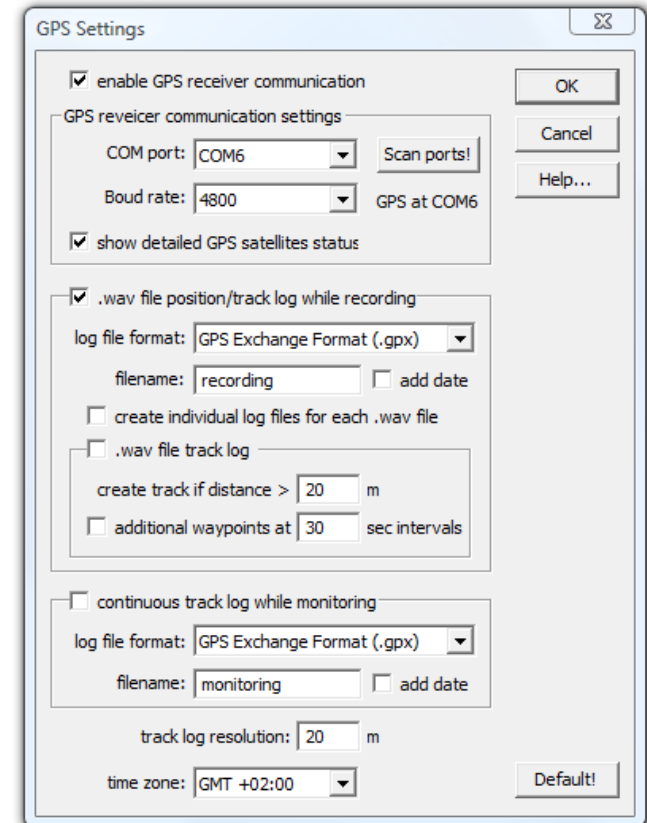
The successfully installed driver is listed on the Ports section of the Windows Device Manager as a "Prolific USB-to-serial Comm Port":



Windows automatically assigns the GPS receiver to a virtual COM port (COM6 in the above example).

The installed GPS receiver can then be selected from the Avisoft-RECORDER command '**Options/***GPS Settings...*'. By clicking at the **Scan ports!** button in the **GPS receiver communication settings** section, the GPS receiver will be detected automatically. Alternatively, you might select the serial port communication settings (port number and boud rate) manually.

The GPS data logging mechnaism is activated from the option **enable GPS receiver communication** at the top of the dialog box.



See also the RECORDER manual or click at the **Help...** button to get further information on how to set it up.

The optionally available notebook carrying frame also allows to attach the USB GPS receiver to it, which makes the entire system more convinient.

Alternatively, a battery-powered Bluetooth GPS receiver could be used, which would eliminate the additional cable connection. The principle of the data transfer is the same because the Bluetooth communication is established through a virtual COM port.