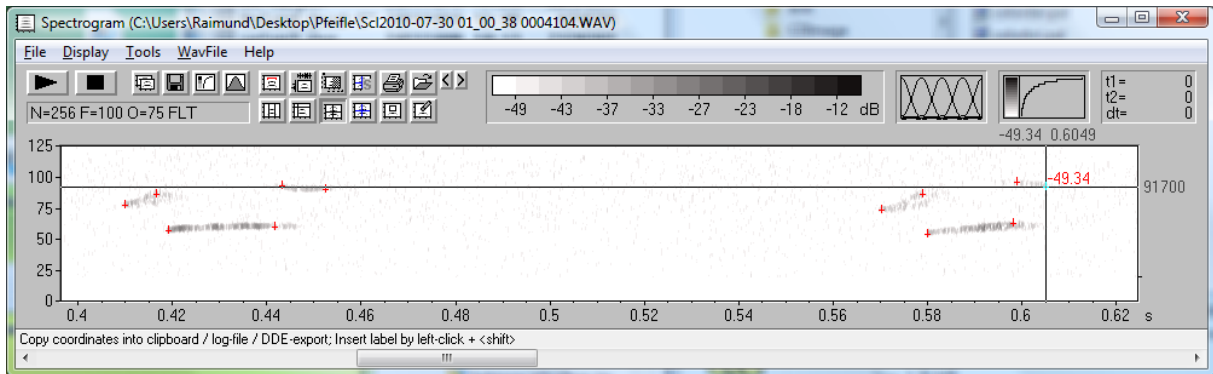


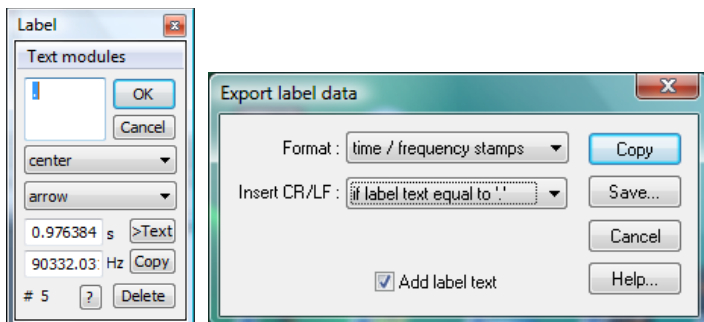
Manually inserting labels by left-clicking while the <Shift> key is pressed:



These manually placed labels represent the time and frequency of the marked point. The labels can be reviewed or edited (moved) afterwards and will be saved along with the .wav file. The coordinates of these labels can then be exported into an ASCII file or into the Windows clipboard from the main window command Tools/Labels/Export label data... :



CR/LF control characters can be automatically inserted based on a time interval threshold in order to separate syllables. In case the individual syllables were too close to each other, the last measurement point of each syllable could be manually marked by entering a dot character:



or alternatively by entering any label text:



Exported labels pasted into Excel

