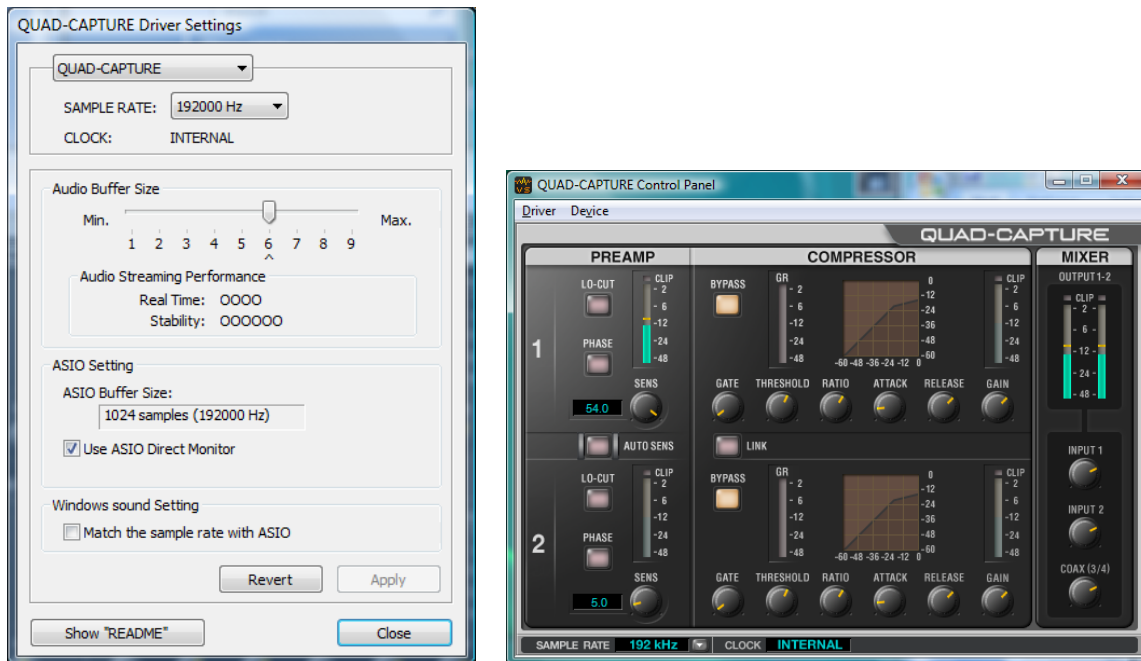
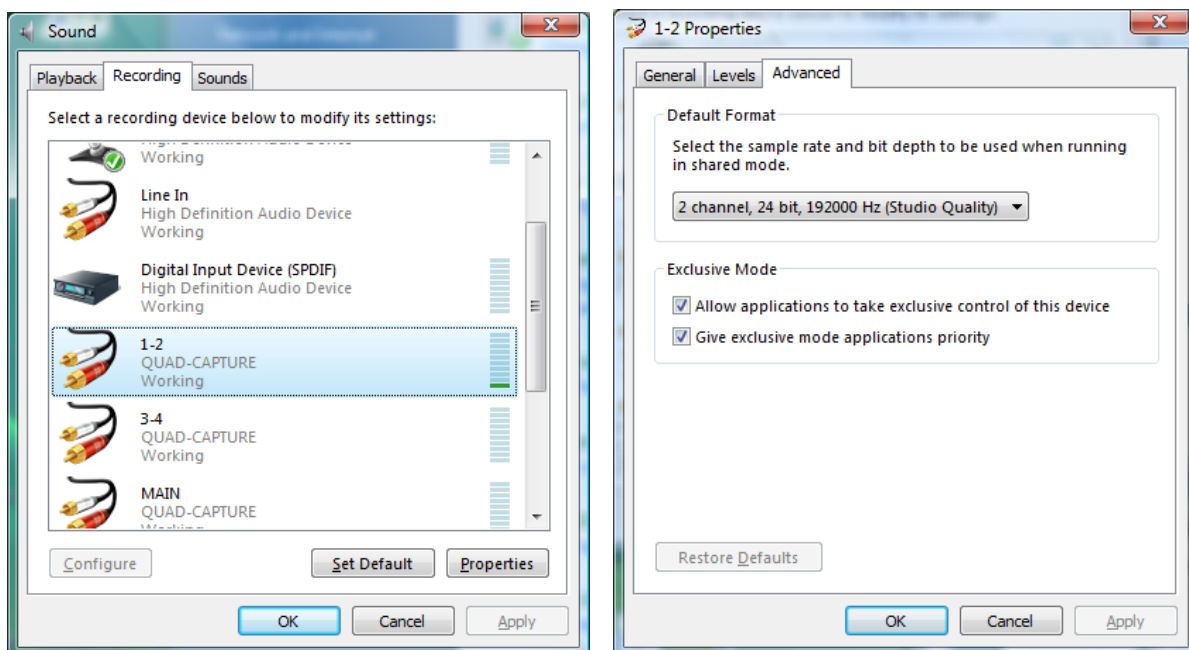


## Setting up the Roland QUAD-CAPTURE audio interface for recording ultrasound

After installing the QUAD-CAPTURE device driver software first launch the **QUAD-CAPTURE Control Panel** dialog box from the Windows Control Panel (select the “classic view” or “large icons”), goto the command Driver/Driver Settings... and select the sample rate of 192000 Hz:



On Windows Vista and Windows 7 it is additionally required to select the recording sample rate from the Windows Control Panel (Start>Control Panel>Hardware and Sound>Sound>Recording>1-2 QUAD-CAPTURE>Properties>Advanced):



On the RECORDER software, the QUAD-CAPTURE device must be selected from the Device list box and the sampling rate of 192000 Hz must be selected as well:

