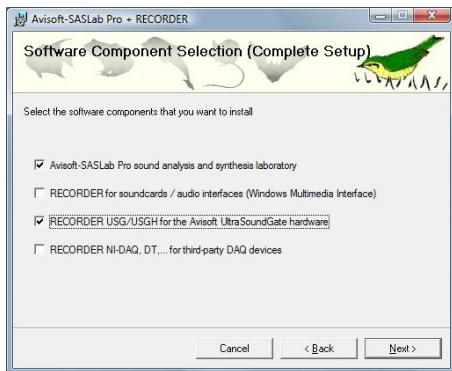


Introduction

Thank you for purchasing Avisoft UltraSoundGate 416Hb. This bus-powered USB device supports 4 channel high-speed data acquisition at sampling rates of up to 300 kHz. The accompanying recording software Avisoft-RECORDER USGH provides either continuous or triggered direct-to-disk recording with real-time spectrogram displays.

Installation procedure

First install the RECORDER USGH software from the supplied software installation media. The installation procedure will require administrator rights. Check the option "RECORDER USG/USGH for the Avisoft UltraSoundGate hardware" on the Software Component Selection panel:



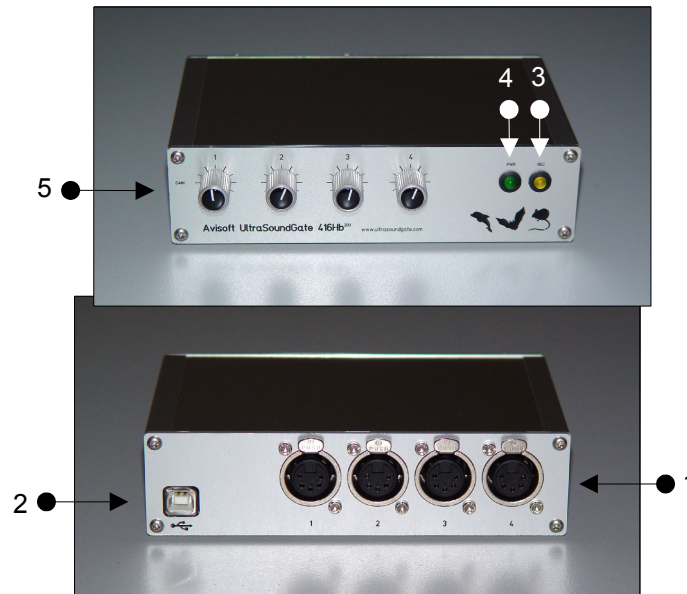
At the same time, the required device drivers (usgh_xx16h.inf, usgh.sys) for the UltraSoundGate XX16H devices will be installed. When the installation procedure has completed, the UltraSoundGate unit can be connected to the computer. The device should then be detected as "Avisoft-UltraSoundGate 416H" and the pre-installed driver should be installed. Under some circumstances (on Windows XP) it might happen that the Windows Device Manager asks for the device driver file usgh.sys, which can be found at C:/Program Files/Avisoft Bioacoustics/Drivers. The green POWER LED (4) should light permanently and the amber REC LED (3) should be flashing.

Getting started

The supplied RECORDER USGH software can be launched from **Start / All Programs / Avisoft Bioacoustics / RECORDER USGH**

On the first program start, the configuration dialog box will be launched automatically (otherwise it is available from **Options / Configuration**). Select the desired **Sampling rate** from the **Input Device Settings** section and click at **Ok**. Then click at the **Pause** button (**Monitoring/Pause**) and the **Start** button (**Monitoring/Start**). You will then see the real-time spectrogram displaying the incoming signals. For details on the operation of the RECORDER software see the Avisoft-RECORDER manual and the section **RECORDER USGH Software Settings** in this guide.

Components of the UltraSoundGate 416Hb



3 REC indicator

This amber colored LED will flash once the device is connected to the PC. It will be switched off once the RECORDER USGH software is running in the monitoring mode. In this mode, the REC LED indicates whether the RECORDER software is recording the incoming data onto disk.

4 POWER indicator

This green LED indicates that the unit is connected to the USB power supply.

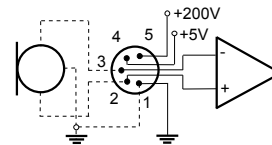
5 GAIN control knobs

The control knobs adjust the analog input recording levels for each channel.

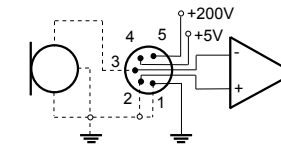
1 XLR input connectors

The 5-pole XLR input connectors represent the analog inputs of the recording device and provide power supply voltages for external amplifiers and microphones. The connector scheme is as follows:

- 1 Ground
- 2 Positive input
- 3 Negative input
- 4 +5V supply voltage (max current 20 mA)
- 5 +200V polarization voltage



differential source




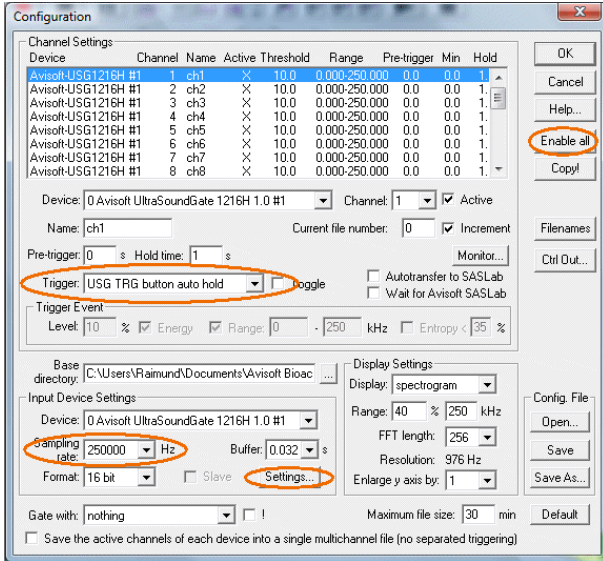
single-ended source

2 USB 2.0 interface

Use this USB socket to connect the device to the computer. The additional USB socket (6) is an additional auxiliary power input that does not transmit any data over the USB.

RECORDER USGH Settings

The configuration dialog box can be launched from the menu Options/Configuration... or through the button 



There is a list of 24 virtual channels at the top of the configuration panel. Each of these virtual channels can be assigned to a physical channel of the UltraSoundGate unit by selecting the desired **Device** and **Channel** number for each list entry. The button labeled "Enable all" will assign and activate all available channels automatically.

The sample rate can be selected from the **Input Device Settings** section and will always apply to all channels of the selected UltraSoundGate device. Available sample rates are 300, 250, 214, 187.5, 166.6, 150, 125, 100, 75, 62.5 and 50 kHz.

The **Buffer** setting determines the USB transfer buffer size on the PC. Shorter durations will provide low real-time spectrogram display latencies but might lead to erroneous USB transfers under certain conditions.

The **Settings...** button in the **Input Device Settings** section launches the **Advanced USGH Device Settings** dialog box that provides several additional device options:



Enable master/slave mode for synchronizing several devices
This option has no effect on the USG 416Hb.

Activate slave mode for this device This option has no effect on the USG 416Hb.

Enable low power mode The A/D converter chips can optionally be operated in a power-saving mode that would increase the battery life in mobile laptop-based systems. The low-power mode slightly degrades the dynamic range performance. This option should also be activated if the USG 1216H is bus-powered from a single USB port only. Otherwise, the supply voltage might drop below a critical value, which can prevent the proper operation of the A/D converters.

Enable band-pass mode At a few sample rates (50, 62.5, 75, 150, 187.5 and 250 kHz), the A/D converters can be configured for a special band-pass mode in which the analog input bandwidth ranges from fs/2 to fs instead of the normal mode from 0 to fs/2. This option can be advantageous for monitoring applications that require minimal .WAV files sizes. Note that the frequency scale of the resulting .WAV files will be reversed.

Turn on the polarization voltage This option activates the internal 200V polarization voltage generator of the UltraSoundGate XX16H devices and must be activated when using the CM16/CMPA microphones.

Ignore GetOverlappedResult error By default, the *GetOverlappedResult* error message will stop the monitoring/recording process. If this option is activated, the monitoring procedure will be immediately restarted, which is desired in long-term monitoring applications.

TRG out mode This option has not effect on the USG 416Hb.

Enable safe multichannel data transfer mode Under some circumstances it might happen that the PC is unable to reliably transfer multichannel data streams through the USB interface without gaps. This can become a serious problem when the sample rates and the number of channels are high and if the latency of the Windows operating system is poor (due to insufficient processing power or misbehaving device drivers). So, if you encounter any problems while recording more than one channel (sporadically mixed-up channels), this option should be activated. The RECORDER software will then immediately correct such false channel associations.

Sound-activated recording can be arranged by selecting the **Trigger** source option *level of this channel*. For remote-controlled triggering via the trigger button on the device or via the external TRG input, one of the trigger options *USG TRG button...* can be used. For triggering by a TTL signal attached to **DIN**, select *UltraSoundGate DI*.

The Pre-trigger duration should be kept as short as possible. Long pre-trigger settings can lead to data transmission errors if the sample rate and the number of channels is high.

In order to simplify the operation of the Avisoft-RECORDER software in the field, a link to **RECORDER USGH** may be added to the Windows **Startup folder** (*Start->All Programs->Startup*). Additionally, the Avisoft-RECORDER option **Monitoring/Autostart** should be activated. This arrangement will start the monitoring process automatically after booting the laptop (the UltraSoundGate device must be attached to the USB port prior to booting Windows).

Please refer to the users guide or the online help system for further details on the Avisoft-RECORDER software.

Avisoft Bioacoustics
Kirchstraße 11
13158 Berlin
Germany

Phone: +49 30 48476986
Fax: +49 30 48476987
www.avisoft.com
www.ultrasoundgate.com

sales@avisoft.com

Specifications

Number of channels	4 (4 separate A/D converters)
ADC type	Delta-Sigma architecture with integrated adaptive anti-aliasing filter
Resolution	16 bit or 8 bit
Maximum aggregate sample rate	4 x 300 kHz / 16 bit
Sample rates [kHz]	300, 250, 214, 187.5, 166.6, 150, 125, 100, 75, 62.5, 50
Frequency response (-3dB)	20 Hz - 140 kHz
Input sensitivity (max trim)	-43.2dBV = -41 dBu = 6.9 mVrms
Input sensitivity (min trim)	-3.2dBV = -1 dBu = 0.69 Vrms
Gain adjustment potentiometer	40 dB continuous range
Input impedance	50 kOhm
Analog input connectors	female XLR-5 sockets
Computer interface	USB 2.0, isochronous high-speed mode
Supply current (drawn from the USB)	400mA
Physical dimensions (W/H/D)	163 x 42 x 1255 mm
Weight	625 g

Computer requirements

Windows PC with at least two USB 2.0 ports, running Windows XP / Vista / 7

In the interest of product improvement, the specifications and/or appearance of this unit are subject to change without notice.